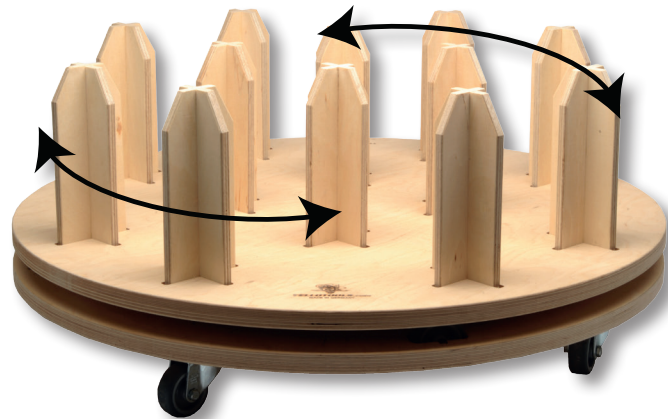


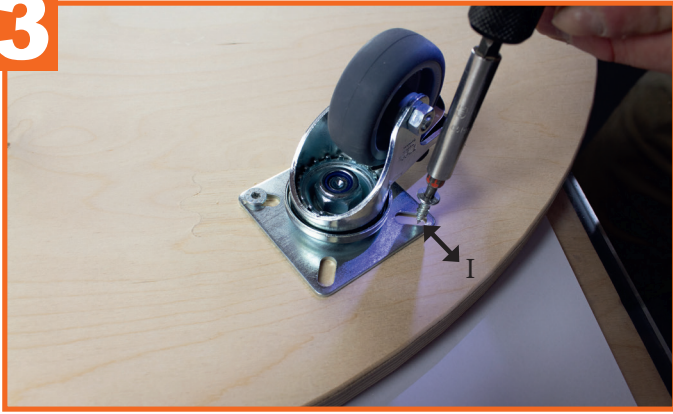
Twister Magnum

User Manual





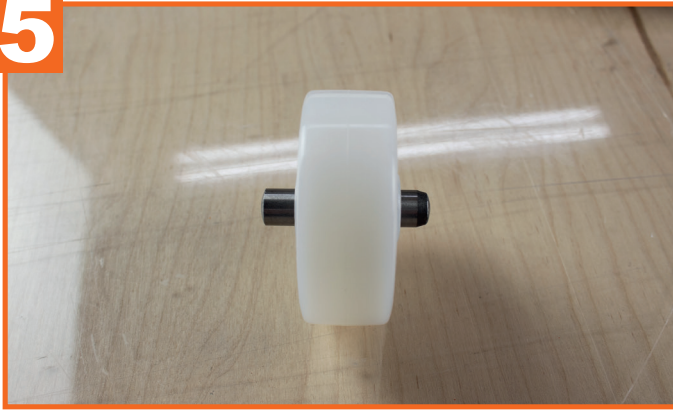
3



4



5



6



7



8



9

Put thread locker into the thread

10

Screw F has to be mounted from the bottom of the Twister Plate into the thread.

11

The thread has to stick out 3cm (1.18 inches).

12

Put the first plate on the top of the bottom part.

13

Apply thread locker again and connect screw G (with washer) to the thread.

14